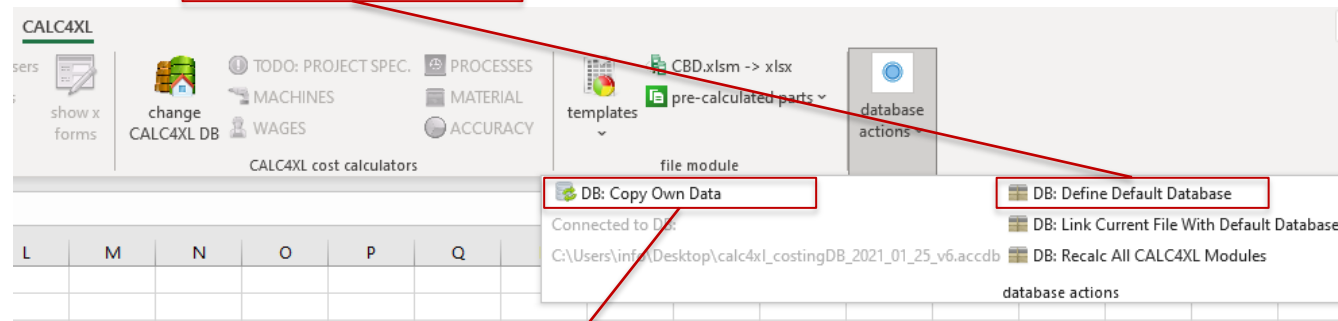


# Database Update

- New CALC4XL benchmark databases include
  - Updated country data
  - Updated wages
  - New machines
  - Updated overhead rates
  - Updated material data
  - New & updated Templates



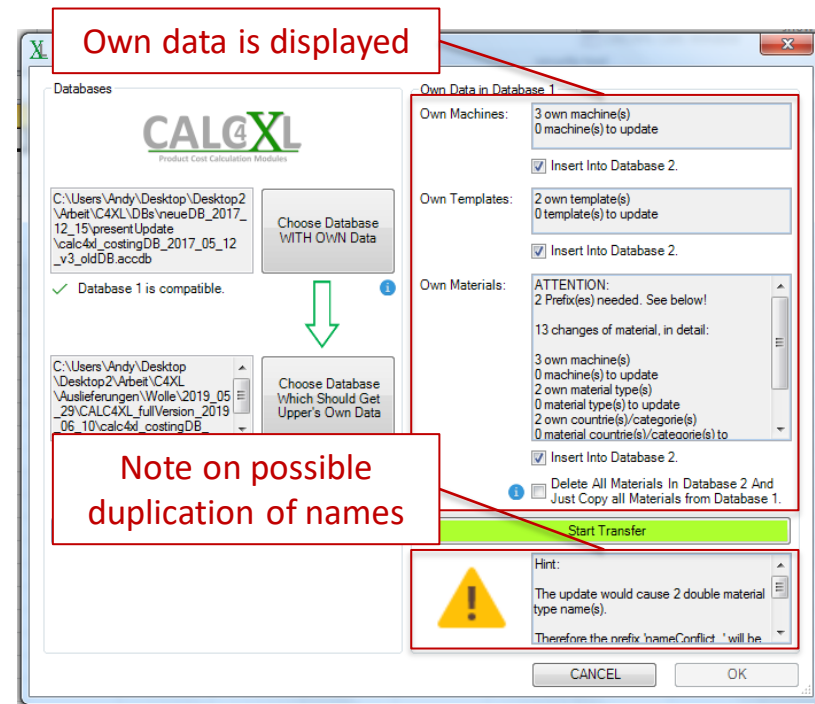
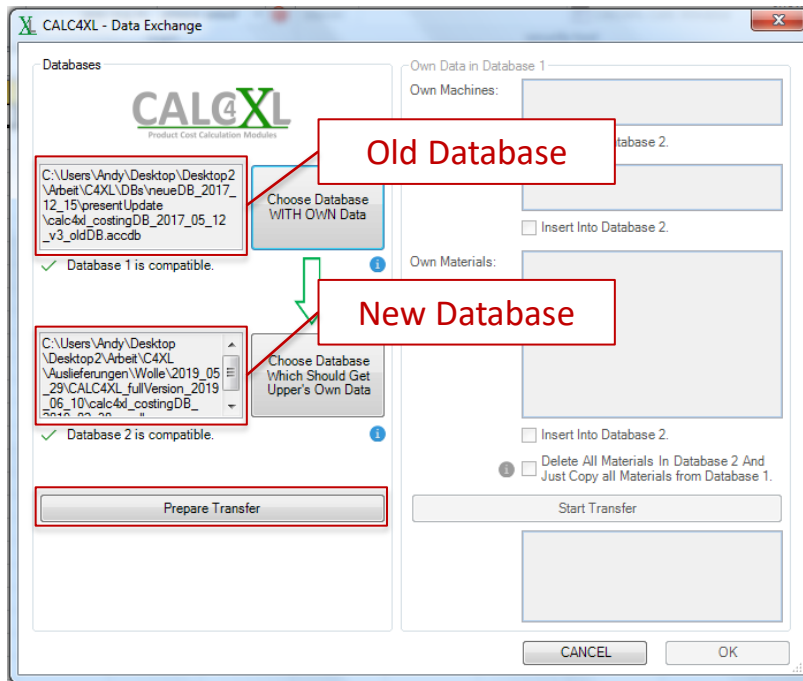
- If you already have a CALC4XL database, you should define the new database as the new **default database**



- If you have created your own data (machines, materials, file templates, ...), you can transfer it to the new CALC4XL database using the DB exchange module:
  - Click on **"DB: Copy Own Data"** in the CALC4XL Excel menu:
  - The database exchange module opens (see next page).

# Database Update

- The database exchange module opens:
  - Select your old database with your own data and
  - Select the new database
  - Press "Prepare Transfer"



- Select which data you want to transfer.
- Press "Start Transfer" to transfer your own data.
- Wait until a green hook ✓ confirms the transmission. Done.